



MAKE A POSITIVE DIFFERENCE AT OUR PIONEERING NEW HEALTHCARE FACILITIES

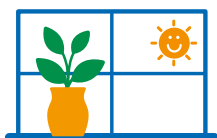


Derbyshire Healthcare
NHS Foundation Trust



★ ★ ★
**WE ARE
RECRUITING
NOW**

**TEAM DERBYSHIRE
HEALTHCARE**



**Making Room
for Dignity**

Join Team Derbyshire Healthcare
makingroomfordignityjobs.org.uk



Team Derbyshire Healthcare

We are a provider of NHS mental health, learning disabilities and substance misuse (drug and alcohol) services in Derby city and Derbyshire county. We also provide a wide range of children's services. We employ more than 3,000 staff providing services from a number of community bases across the whole of Derbyshire. Across the county and the city, we serve a combined population of approximately one million people.

There are few careers that are as rewarding as one at Derbyshire Healthcare. Here you will have the opportunity to support people of all backgrounds and ages.

By joining 'Team Derbyshire Healthcare', you will become part of a talented, compassionate and enthusiastic group of people who work towards a set of values, committed to making a positive difference in people's lives.

“ *The staff have helped me a lot through my good and bad moments and I've learned to do things for myself, accept help and responsibility and become as independent as possible...* ”

- A Derbyshire Healthcare patient

OUR VALUES:



People first – We work compassionately and supportively with each other and those who use our services. We recognise a well-supported, engaged and empowered workforce is vital to good patient care



Respect – We respect and value the diversity of our patients, colleagues and partners and for them to feel they belong within our respectful and inclusive environment



Honesty – We are open and transparent in all we do



Do your best – We recognise how hard colleagues work and together we want to work smarter, striving to support continuous improvement in all aspects of our work.



All staff photos are from the Trust's
Hartington Unit and Radbourne Unit

Exciting new developments

Thank you for showing an interest in working for Derbyshire Healthcare NHS Foundation Trust and our Making Room for Dignity programme.



Our Trust vision is to make a positive difference to our patients, service users, carers, and our colleagues' lives. That positive difference is due to the committed, professional and enthusiastic people we recruit to be part of our team. We offer a friendly, welcoming and inclusive working environment which embraces shared decision-making with colleagues, ensuring our values are at the heart of everything we do.

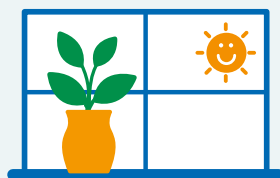
“ *These pioneering new healthcare facilities will be a real asset in providing dignity and care for the people of Derbyshire and the new Psychiatric Intensive Care facilities will really support those who currently need to travel for care.”*

We are a forward-thinking, diverse organisation that prides itself on its 'people first' approach to care, and actively embraces diversity.

I have been a part of the Trust since 2021, and it was the Trust's vision and values which made it such an attractive place to work. I hope you find our new hospital builds as inspiring as I do. I look forward to seeing you soon.

Selina

Selina Ullah - Trust Chair



Making Room for Dignity

In 2020 the Government pledged more than £400 million to eradicate dormitory accommodation from mental health facilities across the country to improve safety, privacy and dignity of patients experiencing mental illness. Significant national and local investment of more than £150m has been allocated for the development of six new and refurbished facilities across Derbyshire, including:

1. **A NEW 54-bed mental health acute inpatient unit on the Chesterfield Royal Hospital site**
2. **The relocation of older adult inpatient from the Hartington Unit to Walton Hospital, Chesterfield with a full ward refurbishment**
3. **A NEW 54-bed mental health acute inpatient unit on the Kingsway Hospital site, Derby**
4. **A NEW 14-bed Psychiatric Intensive Care Unit on the Kingsway Hospital site, Derby**
5. **The full refurbishment of an existing eight bedded unit at Kingsway Hospital providing a NEW Acute-Plus service for women**
6. **The refurbishment of two 17-bed mental health acute wards on the Royal Derby Hospital site**



EXCITING NEW DEVELOPMENTS IN

North Derbyshire



01

NEW mental health acute inpatient unit

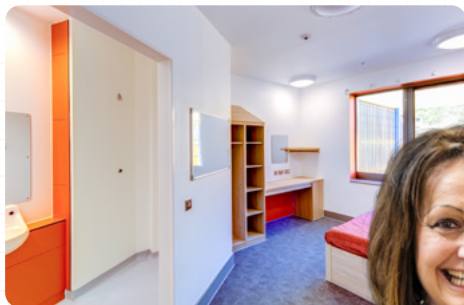
We will be replacing our current Hartington Unit with single-room, en-suite accommodation for working age adults. This new 54-bed inpatient unit will support males, females and have a non-binary space. It will be built on the Chesterfield Royal Hospital site.



02

The relocation of older adult inpatients to a refurbished ward

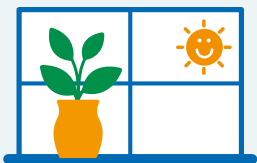
Relocating from the Hartington Unit to Walton Hospital, this 12-bed mental health unit will be refurbished to the same high standards as our new buildings and will provide focussed care for older adults who have specific environmental needs and safety requirements.



“ I was in a dark place when I came onto Morton Ward in 2018 and four years later, I no longer have my mental health diagnosis... I cannot begin to tell you how much you all impacted my life for the better.”

- A patient from the Hartington Unit



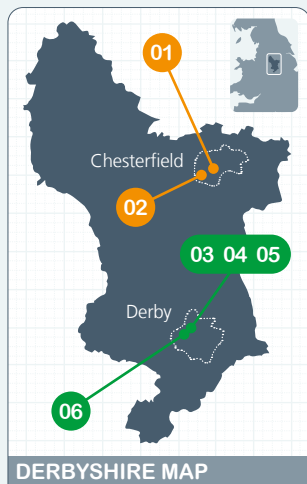


Making Room for Dignity

Our 'Making Room for Dignity' programme includes six projects, including two new 54-bed inpatient units and a new Psychiatric Intensive Care Unit. All six projects will include single en-suite rooms, which will greatly improve the privacy and dignity of those receiving care for their mental health in Derbyshire. Each new building will be purpose built and have a real focus on co-design with service users, carers, and members of our staff. All the refurbishment projects will be to the same high standard and in line with national requirements.

A POSITIVE DIFFERENCE:

- Improved patient experience leading to better outcomes and the reduced risk of readmission.
- Patients' personal preferences can be accommodated, for example, the temperature of each room can be adjusted to suit individual needs.
- Single rooms will also ensure better infection control and reduce the risk of incidents involving patients or staff.
- Non-binary, flexible ward spaces will be available at the new unit in Chesterfield, to accommodate those who do not identify as staying on a male or female ward. This will greatly increase personal privacy and dignity and enable our services to be fully accommodating and flexible without being discriminatory.



DERBYSHIRE MAP

- The new builds will be equipped with modern facilities and additional resources, including a therapy suite incorporating Activities of Daily Living (ADL) kitchen, indoor fitness room, arts room, and access to secure outdoor spaces.



EXCITING NEW DEVELOPMENTS IN

South Derbyshire



03 **NEW** mental health acute inpatient unit

This 54-bed inpatient unit will provide single-room, en-suite accommodation for adult male patients. We will be relocating these services from the Radbourne Unit within the Royal Derby Hospital site to the beautiful surroundings of Kingsway Hospital in Derby.

This new inpatient unit will offer great training and development opportunities for new and existing staff as well as improved safety, privacy and dignity for patients.

EXCITING TIMES...

This is a really exciting time to be part of Team Derbyshire Healthcare and a once in a lifetime opportunity to invest in facilities that will hugely benefit Derbyshire. **Find out how you can be involved at:**

[MAKINGROOMFORDIGNITYJOBS.ORG.UK](https://www.makingroomfordignityjobs.org.uk)



04 **NEW** Psychiatric Intensive Care Unit

There is currently no Psychiatric Intensive Care Unit (PICU) in Derbyshire and people who need this level of support currently need to travel outside the county.

With an average of 14 men being supported outside of Derbyshire at any one time, we are building a new 14-bed male PICU on the Kingsway Hospital site in Derby. This will also provide easy access to a wide range of other specialist mental health facilities including a low secure unit and rehabilitation services.

The new unit will be focused on therapeutic interventions and will deliver care to the national standard of PICU recommendations.

As a completely new facility and service there are greater opportunities for staff and patient input into the development and service.



05 **NEW** female Acute-Plus service

Given the smaller number of women who require a specialist PICU bed, this new eight-bed female Acute-Plus facility at Kingsway will bridge the gap between acute care and PICU care and provide an increased level of support for women.



06 **The refurbishment of our Radbourne Unit**

We will be refurbishing the Radbourne Unit, within the Royal Derby Hospital site, delivering the same national standard of single-room, en-suite accommodation across two ground-floor wards for 34 patients with access to outdoor space for our female service users.



“Throughout my stay on the ward all the nurses and nursing assistants were supportive and very caring ...staff always kept the ward a cheerful and safe place...”

- A patient from the Radbourne Unit



JOIN TEAM DERBYSHIRE HEALTHCARE

Join the talented, compassionate and enthusiastic group of colleagues who are committed to making a positive difference in people's lives.

STAFF BENEFITS:

- Good maternity, paternity, and adoption benefits
- Structured learning and development opportunities
- Generous sick pay and pension contribution
- Health and wellbeing opportunities
- National and local NHS discounts
- Flexible working where possible



Interest in working for us? Visit...
makingroomfordignityjobs.org.uk



If you would like this information in a different language or format, including Easy Read or BSL, contact dhcft.communications@nhs.net

Ак бы ste chceli tieto informácie v inom jazyku alebo vo formáte, kontaktujte spoločnosť dhcft.communications@nhs.net

Pokud budete chtít tyto informace v jiném jazyce nebo ve formátu, kontaktujte dhcft.communications@nhs.net

如果您希望以另一种语言或另一种格式接收此信息, 请联系 dhcft.communications@nhs.net

Si vous souhaitez recevoir ces informations en une autre langue ou un autre format, veuillez contacter dhcft.communications@nhs.net

ਜੇ ਤੁਸੀਂ ਇਸ ਜਾਣਕਾਰੀ ਨੂੰ ਹੋਰ ਭਾਸ਼ਾ ਜਾਂ ਫਾਰਮੈਟ ਵਿੱਚ ਚਾਹੁੰਦੇ ਹੋ ਤਾਂ ਕਰਿਪਾ ਕਰਕੇ ਸੰਪਰਕ ਕਰੋ dhcft.communications@nhs.net

Jeżeli chcieliby Państwo otrzymać kopię niniejszych informacji w innej wersji językowej lub w alternatywnym formacie, prosimy o kontakt z dhcft.communications@nhs.net

Heke hûn dixwazin ev agahdariyê di zimanek cuda an formatê bixwazin kerema xwe ji re têkilî bikin dhcft.communications@nhs.net

ان اب زی رس دوی سکت ام دل عم دی پ آرگ ان رک ل ص ا ح ن ی م ٹ ی م راف روائی س ک ای ن ی ر ک طب ارم رک هارب دت ن ی ه س ت ه ا ج dhcft.communications@nhs.net



Making a
positive
difference

Kingsway Hospital, Kingsway Derby
DE22 3LZ • Telephone: 01332 623700